

# **The ILLINOIS GRANGER**

**Grange Motto**  
In essentials...Unity  
In non-essentials...Liberty  
In all things...Charity

VOLUME 102

January 2018

No. 01

## *Lynette's Visions and Wisdoms*

Lynette Schaeffer

President

of Illinois State Grange

Hope all of you celebrated Thanksgiving, Christmas and New Year in healthy and happy celebrations. Best wishes to all of you for the new year.

St Clair County Pomona Grange Celebration of 150 years of National Grange on December 3, at Turkey Hill Grange, 1375 E State Route 15, Belleville. Starting at 4 pm with potluck at 5:15, fried chicken provided by Pomona Grange. We listened to Charlotte Mehrkens, St Clair County Pomona Master read a history of Granges of St Clair County. There have been a total of 30 Granges in the county with 8 still in existence and in attendance at this event. Arline Magee, spoke about the history of the St Clair County Pomona Grange. Brian Keller, State Grange Historical Committee, President of O'Fallon Historical Society and Lecturer of Enterprise Grange spoke of the Granges around O'Fallon and their members. William P Shannon, IV of the St Clair County Historical Society had a presentation about Radical Roots of the Grange. History was on display by State Grange, Broad Hollow, Emerald Mound, Progressive and Turkey Hill Granges. All the county Granges and several members donated items for silent auction. +\$300 will be donated



to the National Grange Building Fund. Thanks to those that donated and purchased the items and to Marilyn Hoffmann for her coordination efforts.

I know that several Granges held events throughout the state I hope articles will be sent to IL Granger for publication. I would like a listing of all the Granges that participated in 150 celebrations. The attendees at the National Grange GALA enjoyed pumpkin/squash soup sponsored by IL State Grange. The Great Day magazine will have a listing of the sponsors and we will be part of it. Amanda Brozona-Rios was grateful and said the soup was great. "Thanks for sponsoring part of the GALA". I believe I shared the pictures on the ISG page.

The 151st National Grange Session was November 7 - 11 in Spokane, Washington. Air travel can be exciting - we arrived late and our luggage was later. But all were in time for most of

See PRESIDENT/Page 2

## Happy Birthday National Grange!

By Elaine Hecathorn  
Grange Communications Director

I would like to share some highlights of the 150 year history of the National Grange.

The National Grange founded in 1867, is the nation's oldest general farm and rural public interest organization. The history of the National Grange is a history of progress and achievements for farmers and rural communities across this country.

**1867** - The National Grange becomes the first nationwide farm organization and is the first national organization to give full voice and vote to women.

**1870's** The first national farm organization to attempt to organize African American farmers after the Civil War. Chicago entrepreneur Montgomery Ward begins his mail order business as a contractor to the National Grange selling exclusively to Grange members.

**1880's to present** Grange sponsored fairs, attracting more than 1 million visitors each year National Grange introduces the "Rochdale" system of cooperative business organization to America.

**1880's - 1910's** The National Grange secures passage of legislation to protect the political and economic rights

of farmers and consumers including: the Hatch Act creating "Experiment Stations" at state colleges of agriculture (1887), elevation of the U.S. Department of Agriculture to the President's Cabinet (1889) rural free delivery mail service (1901), the first legislation promoting ethanol as a motor fuel (1906), the Pure Food and Drug Act (1906), 1910's Grange secures passage of successive pieces of legislation to finance general transportation improvements to benefit farming and rural communities based on dedicated user fees deposited in highway, waterways and airport trust funds

**1920's** National Grange organizes mutual insurance companies focused on serving farm and rural markets.

**Post WWII to Present** The National Grange steadfastly supported national farm legislation as well as multilateral trade negotiations and food aid programs to open foreign markets to U.S. farmers, advised Congress and supported every periodic reauthorization of national farm legislation, known as the "Farm Bill". The National Grange assisted in rebuilding a world ravaged by economic depression and war.

See BIRTHDAY/Page 2



Send Grange news to:

Ruth Blasingame, 8711 Deer Run Drive, Belvidere, IL 61008  
or e-mail to: illinoisgranger2017@gmail.com by January 31, 2018.





# PRESIDENT

*continued from page 1*

the meeting and not dressed in the same clothes. Our resolutions: two were withdrawn – two were present policy-one added to policy statement. Election of Officers – had a few changes, Phil Prelli (PA) is now Overseer, Executive Committee has two new members – Steven Coyo (NY) and me (IL), Wilena Shufeld (OK) Flora and Cindy Greer (CO) Pomona. Dale and Jane Helms and Janet Plote attended much of the meeting.



Quilts of Valor presentation. National Grange Hall of Fame inductees, Charles Gardner and past Master of IL State Grange, Eugene A Eckert was inducted. I hope that many of you donated to the National Grange Youth for the 'pie' in the face. The goal of \$10,000 was reached and there was a 'pieing' – several nights – with the final being part of the Evening of Excellence. Great fun and a Great cause. Juniors gained as well – sold tickets 'to do the 'pieing''. And importantly the Granges / Grangers need to make donations to the National Grange Building Fund, now is the time. Awards were accepted for Distinguished Grange – Turkey Hill and Prairie. There were 4 Legacy families from IL honored at National Session. The Hecathorn, Helms, Schaeffer and Wych/Hall (Ellwanger) families, each family has at least 5 generations of Grange membership. I am glad that two generations of Helms family were be at National with Don and I to accept the recognition. National Grange will have the program again next year. We will honor them at the next state session. Two State Granges have lost their charter in the past year, Alaska and South Carolina. Both have fallen below the 7 Granges necessary for State Grange Charter. Several States had increases in membership – good to see.

Thanks to all those who attended the GRIT (Grange Resources Information and Training) sessions, October 15 at Enterprise Grange Hall and October 29th at Boone County Community Hall. Both were well attended, and I am glad that everyone took the time to attend. There were 39 people at Enterprise from 10 Granges and 37 at Boone from 12 Granges. The presenters did a great job explaining everything and leading discussions.

Thanks to Karie, Carol, Tracey, Elaine, Ruth, Mike, Marilyn, Mindy, Ethan, Marion, Lindakay, Charles, and Sheri for the presentations and contest explanations. The "G"-bills were collected and "Lincoln's for National Grange Building" were collected. The Northern GRIT has donated more G's and Pennies. Each Grange can collect pennies, or any change, for the National Grange Building Fund, which we will collect until State Session next year, or donate direct to National Grange any denomination you like.

Quarterly reports will be coming out soon – hopefully at the Training Sessions in January.

St Clair County Pomona Grange is making plans for September 14- 16, 2018 at Shrine of Our Lady of the Snows, Belleville, IL, 147th State Session. We will have a theme - - 200 years of IL Friday night you are invited to dress appropriate for 1818 the year IL became a state. There has been a suggestion of going to the GROW exhibit at the STL Science Center that was talked about at the last session. If you are interested in a tour on Thursday before the session starts, LET ME KNOW.

Plans are being made for leadership training for anyone interested – January 21 will be South and 28, 2018, 1-5 pm will be North. It would be at least 4 hour meeting – the training sessions have not been completed yet. Karie and I will be working on the ideas. When details are finalized information will be shared via email, Facebook and USPS mail. There may be a fee for Leadership meeting for copies. Suggestions for topics let Karie or I know ASAP??

The Bonding letters will be distributed soon, hopefully right after the new year.

# BIRTHDAY

*continued from page 1*

These are just some of the accomplishments of the National Grange throughout its proud history. We encourage everyone to learn more about the important role the Grange continues to play in the history of their community, their state, and the nation by visiting [www.nationalgrange.org](http://www.nationalgrange.org).

I would like to thank Amanda Brozana-Rios, National Grange Communication Director for permission to use part of her article. More can be found on the Illinois State Grange website under communication.

## Blast From The Past

**By Beverly Smith, Grange Historian**

By now your Grange has received my request letter from the GRIT conference. My new request is to have you all work on your Junior/Juvenile Granges histories, even if you don't have an active one now. I have been doing some research on past Juvenile Granges in Illinois. The following have records stored at N.I.U.=Etna Juvenile Grange #86 from 1959-1964 and Ohio Grove Juvenile Grange 1945-1947. Many Granges made great sacrifices to make room in their Grange halls for the Juvenile Grangers to meet. Magnolia Grange in April 1973 IL Granger reports that they remodeled to add a Juvenile Room. Jordan Juvenile Grange organized in 1940 enjoyed supplies and equipment bought by the Subordinate Grange reported in July 1950 IL Granger. LeRoy Community Juvenile Grange #84: 1954 they discussed adding Junior room, 1956 they purchased a 19x12 garage for addition to the kitchen but was built on for a Junior room. Therefore on June 28, 1957 a Juvenile Grange was organized by Sister Elizabeth Orr. In 1975 the hall was robbed and the Junior Grange flag was among items stolen. Oak Glen #23 was organized on May 27, 1932 with 19 members. Poplar

Grove #59 was organized in 1935. It only functioned for a couple of years, then the majority were eligible to join the Subordinate Grange. In 1947 it was re-organized with 24 members.

These are just a few stories we need to preserve Juvenile/Junior Grange history! So I hope all IL Grangers sit down with your young members and document organization dates, accomplishments and interesting activities and send to me.

Since my presentation at the North GRIT conference, Anna(Hammond) Schiro from County Line Grange sent me an interesting article she ran across concerning a family member Eben (Ebon?) Hammond. The article is from Belvidere Standard July 3,1877 announcing the passing of this patron of Caledonia Grange #706 but our Grange listing has Caledonia Grange as #1801.

I want to share a very witty quote from Roy Moss (charter member of County Line Grange) made at their 75th Grange Anniversary that really sums up GRANGE HISTORY! "Every one of our members living and gone, gave of their best in every way and helped to preserve this fraternity that you might enjoy its brotherhood and sisterhood".



USPS 016-670

IS PUBLISHED MONTHLY by  
**ILLINOIS STATE GRANGE**

8711 Deer Run Drive.,  
Belvidere, IL 61008

Periodicals Postage paid at Mascoutah, IL

**Postmaster:** Please send address changes to:

The Illinois Granger, 8711 Deer Run Drive, Belvidere, IL 61008

Lynette Schaeffer, Editor

10041 Rieder Rd.

Lebanon, IL 62254

RUTH BLASINGAME,

News Editor

8711 Deer Run Dr.,

Belvidere, IL 61008

815-299-7884

**COPY DEADLINE FOR NEWS AND**

**PICTURES: 30th OF EACH MONTH**

Please send all news and

pictures to:

RUTH BLASINGAME

8711 Deer Run Drive

Belvidere, IL 61008

[illinoisgranger2017@gmail.com](mailto:illinoisgranger2017@gmail.com)

DONATIONS: \$10.00 PER YEAR

For correction of addresses mail

to: The Illinois Granger

8711 Deer Run Drive

Belvidere, IL 61008



# Ag Department Report

**By Carol Neff, Agriculture Chairman**

It takes darkness for soybeans to ripen. You may have noticed when there is a light post on the edge of a bean field, there's always some beans that do not ripen. They don't get enough darkness to ripen since the light shines all night.

I don't know if you have Japanese Honeysuckle bushes in central and northern Illinois, but we sure do in southwestern Illinois. Now is a good time to get rid of them as is spring and summer. They are extremely invasive and spread quickly. Spray or dig them up or cut down then keep after them. They can be hard to get rid of. They usually take over in forested areas, orchards, and around ponds and lakes. They are still green after a freeze and are really early getting leaves in the spring before any of the other plants. In the fall, they get bright red berries on them unless the plants are young.

January brings the seed catalogues so think about what you want to grow to enter in the contests. You can enter any item you want but can only have one entry for each item. You can enter as many different fruits, vegetables, crops, flowers, etc. you want. Here's hoping for good weather so we can have lots of entries.

Are you looking for outdoors plants that provides winter interest? We often think of winter as dull and drab while the plants go dormant until spring, but you can add interesting features to your yard in many ways through foliage, bark, berries, shape, and movement in the wind. By choosing certain plants you can get varied textures, many different shades of earth tones, provide winter interest, and some extremely early blooming shrubs and

trees. Some provide food for wildlife to help them make it through the winter. I came across an article that offered several suggestions. These include blue spruce for color, winterberry for bright red berries birds love, paper bark maple for showy foliage and peeling bark, red twig and yellow twig dogwood for colorful bark, pink muhly grass that sways in the wind, witch hazel which blooms mid to late winter, coral bark Japanese maple which is brightest in the winter, Hinoki false cypress with golden green foliage, Harry Lander's walking stick for its gnarled shape, and flowering crabapple for its brightly colored fruit in winter. They are also showy other seasons of the year, too.

Hope everyone had a great Thanksgiving. There's a lot to be thankful for. I know I'm thankful to have grown up on the farm in the era I grew up in. I've always been an outdoor person and even before I was old enough to drive the tractor I rode every round while my Dad plowed, disked, harrowed, cultivated, and harvested. Growing up on a farm you learned to drive a tractor at an early age. What was work didn't seem like work--it seemed more like fun--plowing the soil, disking, harrowing and cultivating, making hay, and much more. How farming has changed--the big equipment makes large farms easier to get the job done, no-till better to keep erosion down, but there's more problem with compacting the soil due to the weight of the equipment. We grew wheat, soybeans, corn, and alfalfa for hay. I miss the variety of crops on the farm. Now whole farms are in one crop.

We learned to drive the truck, a stick shift, at an early age by taking it across the field to empty the combine or

picker's load onto the truck. In our area, farmers had a little of everything. We had Jersey and Guernsey dairy cattle and even when we switched to white faced Herefords, we kept two dairy cows plus we had pigs (a cross between Duroc, Yorkshire, Hampshire, and Spotted Poland China), fryers and laying chickens, ducks, geese, turkeys along with the usual cats and dogs. About the only thing we didn't have was sheep and goats. Kids learned responsibility early, how to make work fun, experienced self-reward for doing a good job, teamwork, what hard work was, satisfaction of doing a good job, enjoying and appreciating nature and much more from their farm upbringing. We automatically knew that animals get fed first and was taken care of before we ate. Even a couple of years ago when I still had a dozen chickens or so and a dog they were fed first before I had my meal. Today, as I drive through the countryside I miss seeing the various animals people used to have. You see some but not as much. Most had to either go big or not have them at all to make ends meet.

Don't forget to help the birds and other wildlife make it through the winter. When the weather is nice, they can go out and find food, but when it's nasty they need to know where they can find food in your yard. Either by providing food (black sunflower seed is favored by most birds) and native shrubs also provides food at least part of the winter. Don't forget water which doesn't have to be in any fancy container. A heated dog water bowl works great, but put a rock in it since most are too deep and birds like shallow water. They'll need shelter from the wintery weather which can be as simple as trees and shrubs,

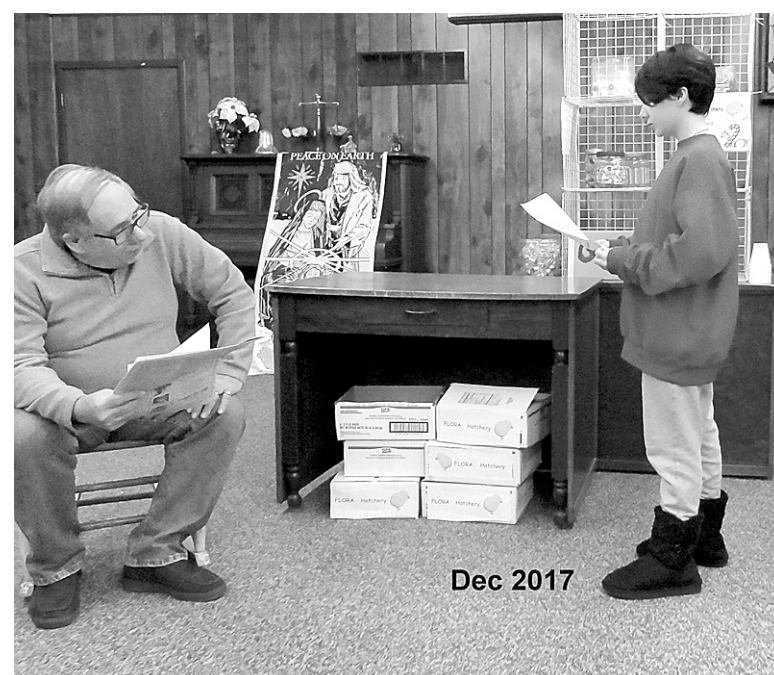
evergreens with low branches, and brush piles. It's easy spending time watching what birds come to your yard and feeders--Cardinals, blue jays, chickadees, juncos, American goldfinches, Carolina wrens, downy and hairy woodpeck-

ers, titmouse, red-bellied woodpeckers, and others. Be kind to animals and help them out.

Here's wishing the National Grange a great 150th birthday!



(Above and below) Following an awesome potluck supper, entertainment at the Flora Grange Christmas party was provided by Flora Juniors and the junior committee. After the Chicken Farmer and Candy Store skits we learned about the history of several familiar carols as well as sang them. The Christmas story was read from Luke 2 vs 1-20 and the evening ended with a candlelight singing of Silent Night.



Dec 2017



# St. Clair County Pomona Grange

By Carol Neff

St. Clair County Pomona Grange along with Granges in St. Clair County had a special event on Sunday, December 3, to help celebrate the National Grange's anniversary on December 4. The event took place at Turkey Hill Grange.

Lynnette Schaeffer, Illinois State Grange Master and National Grange Executive Committee member, welcomed everyone to the special event. Charlotte Mehrtens, Master of the St. Clair County Pomona Grange, gave a history of the Pomona Grange which was organized in 1874 with the first Master, Benjamin J. VanCourt from Flora Grange in O'Fallon. The members of the Pomona Grange ran a cooperative store. Meetings were held in the jury rooms at the St. Clair County Court House in Belleville during the early days. (In 1917, the National Grange met in St. Louis.). Over the years, many Grange members from St. Clair County have held State Grange and

National Grange offices.

Area historical societies were invited to share information about Granges, past and present, in their area. Local history of Granges was presented by Arline Magee. The first Grange in St. Clair County was Whiteside Grange organized in 1872 named after the pioneer Whiteside family and was located in Belleville, meeting at the Whiteside School. The next Grange organized was Flora Grange in O'Fallon which was active 11 years. Other Granges organized after that was Valley Grange in Shiloh Valley Township, Oakland Grange, Chocktaw Grange, Pleasant Valley Grange, an Emerald Mound Grange that later disbanded, Richwood Grange, Turkey Hill Grange, Bagley Grange, Bethel Star Grange, Ridge Prairie Grange, Central Grange, Bob White Grange, High Prairie Grange, White Star Grange, Locust Grove Grange, Wheatland Grange, Dutch Hill Grange, Point Lookout Grange, Woodland Grange and Mississippi

Valley Grange. (Prosperity Grange was located in Randolph County and Lindley Grange in Madison County and was part of the St. Clair County Pomona Grange.) Present-day Granges in existence is Bluff Grange, Broad Hollow Grange, Emerald Mound Grange, Enterprise Grange, Floraville Community Grange, Progressive Grange, Shiloh Valley Grange, and Turkey Hill Grange. The current Granges have been around for a total of 752 years. A short history of the founder the Grange, Oliver Hudson Kelley, was also provided.

Featured speaker for the program was William Shannon, IV, Curator of the St. Clair County Historical Society. He spoke about how far ahead of its time and how progressive the Grange was and, at times, radical, for example, proposing that women should have equal voice and vote in the United States. He presented many little-known and often times forgotten facts about the Grange in its early years, and it's affect on our country.



Jane Helms accepts the Turkey Hill Grange plaque for five consecutive years as a distinguished Grange from National Grange President Betsy Huber at the National Grange convention in Spokane, Washington. Only six other subordinate Granges received this honor this year. David Donley has been the chair for this long term project.



Leaf River Grange members recently presented dictionaries to all third grade students in Polo grade school, all the students seemed delighted. Presenters were Wendell and Delores Poppen, Chris Printz and Mary Jane Zipse.

## Bluff Grange Report

Bluff Grange met on Friday evening November 3, for their monthly meeting. We discussed getting prices for painting the roof of the hall and doing some repairs to the outside that need to be done. Reports were given on how to increase our membership and some remaining reports from State Session were given.

After meeting was adjourned we set up the room

for our Trivia Night the next night setting up tables and decorating. After snacks and good bye for the evening and get ready to return for a fun Trivia Night. We were disappointed by the small turnout for the evening as this is our major fundraiser for the year other than our meat shoot in the spring. We will most likely have to plan another fundraiser for the season.

## A Note from Ruth

Please note the deadline for you to get your articles to me is the 28th of each month. I will edit every article I receive as best I can. Please remember Grange is always capitalized!! If you have any questions call or email me. 815-299-7884 or illinoisgranger2017@gmail.com.



# Junior Grange Report

By Melinda (Mindy) Schiefer  
ISG JR Director

HAPPY NEW YEAR!!  
Now is a great time to think about what you want to do during the next year.

With the new year changes are happening on the National Grange level, thanks to the Junior Director Samantha Wilkins. The new guidebook is out with the theme "Stand up and Speak Out" for the year 2018. Encourage your Juniors to find something they are for or against and how they can bring attention to that issue. The 2018 Host State will be Vermont, and Minnesota will be 2019. Changes to requirements for the JG Ambassador and Super JG have been made.

A handy craft has been added this year to the regular projects of Creative Art, Creative Writing, Mini-Scrapbook, and Photography so there are plenty of ways to keep your Juniors busy learning and having fun. Remember these are IN ADDITION to the projects for our annual state session within the AG, FAC, Lecturer, and Junior departments.

A Pen Pal Program is something else new this year giving an opportunity to learn about others across the US. To sign up and be matched with another Junior send the name, age, Grange name, State, and mailing address to: Samantha Wilkins, National Junior Director, 21578 Pleasanton Rd., San Antonio, TX 78264...or you can email to: Junior@nationalgrange.org.

Changes are being made to the merit badge program with some being temporarily retired. If your Junior earns one of these, a certificate will be sent from National. Just

let Samantha know. Each month in The Patrons Chain, a badge will be highlighted. If earned during that month, special recognition will be received from National. Be sure to check the National Grange website each month for more information.

The 2018 Awareness Award will be concentrating on "Pollinators".

Again this year is included a 12 month meeting guide to help inspire the leaders. Did you know Ben Franklin's birthday is in January? Why not try out "Baking" some cookies or other favorite dessert in honor of, and learn more about this wonderful person. With February comes "Presidents" day and a chance to learn about some of the founding fathers. Do you know who the first Grange Master/President was? Maybe this would be a good time to make some valentine cards (a FAC project for Illinois State Grange session) and deliver to a local nursing home? What is your favorite Dr. Seuss book? Celebrate his birthday during the month of March with a Rhyming Scavenger hunt (<http://fun-a-day.com/rhyming-activities-for-children/>). Practice the Junior Grange Pledge. These are ideas and are not required, just something to help you while you guide those within your Junior Grange.

I will be putting this, and other information together for each Junior and +1 leader. If you do not have any Juniors but would still like information, please let me know. I would also be glad to help plan activities at your Grange to try and get a group going.

From the wonderful words of Tigger...TaTaForNow

# Membership Report

By Lindakay Ebel, ISG  
Director

As your new ISG membership director, I thank you for the opportunity to serve you and your Grange. I am a member of Flora Grange #1762, serve as their treasurer and also a member and serve as treasurer for the Boone County Pomona Grange. I have met many of you as my husband Al and I were delegates the past two years at the ISG convention, also at the GRIT's and leader's workshops.

My theme this year is: "THINK GRANGE, THINK NEW MEMBERS". Webster's defines membership as the state of being, or status as, a member of an organization, a person belonging to some association, society, community, party, etc.

The Grange is an organization ranging from local communities to the National Grange organization. At our local level we are community Granges, otherwise known as 'subordinate Granges'. All subordinate Granges are grouped together to form 'Pomona Granges'. Next in order comes State Granges, which is where the Grange begins to be especially active in the political process. State Masters are responsible for supervising the administration of Subordinate and Pomona Granges. State Granges form the National Grange.

April is Grange Membership month, however, I feel every month is a membership month. Although the Grange was originally founded to serve the interests of farmers, because of the shrinking farm population the Grange began to broaden its range to include a wide variety of issues, and

anyone is welcome to join the Grange. Junior Grange, open to children 5 - 14, Regular Grange, anyone 14 or older.

Joining a local Grange is a positive step which can bring many personal rewards. Prospective members are recommended by existing members, but, in actuality, anyone interested in joining merely needs to approach a Grange member and ask for an application.

The Grange has the historical distinction as being one of the first major national organizations beside the Church which sought the membership and involvement of everyone in the family. Grange members have an equal voice and an equal vote at meetings regardless of their age, sex or position within the Grange. Children ages five through fourteen are eligible to belong to a junior Grange whether or not they come from a Grange family. Grange members can be part of the team through leadership, start a project and see it through and improve skills while competing with fellow members. In the Grange, you grow as a person and a leader and you learn how to voice your opinion and learn how to initiate action in

your Grange and learn new skills in different positions and learn skills that can also help you in other aspects of your life. Men and Women, Young and Old are equal.

Why the Grange?? Many reasons:

- Friendships - Life-long friendships
- Fellowship - Expand circle of friends
- Met New People, have fun and enjoyment
- Opportunity to make a difference
- Educational activities
- Promote education
- Legislative activities

So, let's ALL get out there and find ways to attract new members to our local Granges, by creating activities and programs to attract them. Talk to your friends, relatives and neighbors and you can also invite them to a meeting or a special open house (serve refreshments) and introduce them to our programs and other Grange members, and be sure to make them feel wanted and needed.

Shopping for the Christmas holidays, Give a gift of membership to your Local Grange, or your Pomona Grange.

## CALENDAR OF EVENTS

Jan 21 - Emerald Mound Grange Pancake Breakfast

Jan 21 - Leadership Conference South

Jan 27 - County Line Grange Chicken Dinner

Jan 28 - Leadership Conference North

Feb 24 - Big Thunder Applebee's Pancake Fundraiser

Mar 10 - County Line Grange 4-H Fundraiser

Apr 14 - Prairie Grange Consignment Auction

*Please send me any important dates for your Grange.*

# News From Hopewell Grange

By Janice David

Hopewell held a very successful pancake and sausage supper and bake sale. Our annual fundraising event was blessed with good weather, and we had a great turnout of loyal pancake eaters. We had many positive comments about the sausage and also the sauerkraut with pork hock meat. Students from the Washington High School service club provided most of our dining room staff.

We could not do the dinner without their help. Our guests really like having the students serve them.

Just two days later we hosted a craft and vendor fair at the hall. Again, we had good weather and a fair number of shoppers. Now as we move into December, we will use the first Saturday to serve as bell ringers for the Salvation Army. Our Junior Grangers will help with this project as well.

Hopewell's open house was scheduled for Sunday, December 3. Its purpose was to highlight the 150 year celebration of the National Grange. We invited the surrounding community to this event.

We held our regular meeting on December 14 where we enjoyed Christmas cookies and punch and collected canned goods for our local food pantry. Christmas greetings to you all from your brothers and sisters at Hopewell Grange.

## Troy Grove Grange Report

By Ethel Bauer

2018 in Belleville

Troy Grove Grange Met November 16, 2017 at 7:00 PM at the Hall. 6 sisters and 3 brothers were present.

Family Activities Chairman Joan Dennison reported no meeting in November. The group will meet December 5 and go out to eat.

Community Service Chairman Ethel Bauer read an appeal from PADS. They are having a larger number than usual clients. A motion was made to send a cash donation the first of February.

Agriculture Chairman Jim Weber reported that rains have slowed Harvest. The corn is wet. There is a lot of corn and beans still in the fields East of us.

Legislative Chairman Roy Plote reported the proposed tax bill has passed the House. In present form farmers will be financially hurt. Many people will not pay any taxes. A study showed that Rural Broad band is badly needed in less populated areas.

In communications:

The dictionaries have been distributed.

Next year's State Meeting will be September 14 to 16,

Janet Plote reported on her attendance at National Grange. Her family was presented the Legacy Certificate as a multi-generational Grange-Family.

Ethel Bauer reported that she talked to a repair person from East Peoria regarding the post office handicap door. He will require up to \$560 to come up. Ethel was given the lease to study to determine our responsibilities regarding the door.

December's Meeting:

Troy Grove Grange met December 21, 2017 at Ziggy's at 6:00 for the Christmas meeting. 7 sisters and 2 brothers were present.

Family Activities Chairman Joan Dennison reported that the group had met on December 5 at noon at Ziggy's for their meeting. 3 members were present. Joan reported that Mendota Elks would possibly be assuming the Dictionary project.

Community Service Chairman Ethel Bauer reported the Christmas treats have been delivered to Lighted away and 20 laprobes have been delivered to VITAS. The situation with the handicap door

opener at the post office has been resolved. The Post Office will be responsible for repairs or replacement. The bathroom at the Grange has been fitted with the required handicap equipment.

Agriculture co-Chairman Roy Plote reported on a survey in which 52% of farmers felt they were worse off than a year ago.

Legislative Chairman Roy Plote reported that he was now an Activator Trustee for Farm Bureau. He and his group will interview prospective political candidates seeking endorsement.

A new law is requiring truckers to use electronic logbooks. This may be a problem for livestock haulers. There is a 90 day moratorium while this and other issues are studied.

In communications - Christmas greetings were received from VITAS - There will be leadership training in January - dues paying will be in January.

Requested demits were given for Julie Gerhart and Beth Sutherland.

The next meeting of Troy Grove Grange will be January 18, 2018 at 7:00 at the Hall.

## County Line Grange

By Linda Mullins

We are all very thankful for all the beautiful weather we've had lately. Lots of Christmas decorations being put up, and outside chores getting done.

Our meeting was held Nov.8th. Hosts for the evening were Marie, Linda, and Joellen. Thanks for all the food. We also had a "Going Away" cake for Harold Haws. He is moving to Branson. Good luck to him, but we'll miss him.

Ruth Blasingame was our guest. She talked about the float for the Christmas parade, and how we can help with that. Thank you Ruth.

Our Hometown Christmas is coming up this weekend, Dec.1st. We discussed

our decorations for the tree and the extras we give with it. Hope it helps make our chosen family's Christmas a little better. We will be selling chili, BBQs, and hotdogs in the Community Building. Also we will be selling our Scholarship meat raffle tickets during that time.

We donated money to the Belvidere's Salvation Army for their toy distribution. We have members who volunteer at the Sal. Army regularly. We are ringing the bell at Shopko, Dec.5th.

We discussed doing our Grange outing for 2018 at Camp Grant. Sounds like a great place to visit.

We also talked about how we could be of help to the Veteran's Drop in Center.

Hope everyone had a safe, happy, Merry Christmas.

## Broad Hollow Grange Report

Broad Hollow Grange held a Christmas potluck, meeting and Christmas program on December 1st, and helped celebrate the National Grange's 150th birthday.

At Broad Hollow Grange's meeting on November 3rd, final plans were made to celebrate the National Grange's 150th anniversary and to have a Christmas program and potluck. Members were reminded that the Grangers in the county will also be celebrating the National Grange's anniversary on Sunday, December 3rd, 4 p.m., at Turkey Hill Grange, with the meat provided by the St. Clair Country Pomona Grange. Our Grange will be donating a basket of items for the auction at the celebration. The State Grange Historian is asking

each Grange to compile a history of their Junior Grange. The second trip the Grange is sponsoring to Branson has a full bus load. Arlene Brandenburger and Carol Neff attended the Grange Information Conference to get an update on the upcoming year's programs. Committees reported. Mindy Schiefer from our county has been appointed the new State Junior Director. During the months of January and February, the Grange will be meeting on the first Sunday at 1:30 p.m. with the next meeting January 7th.

The program for the evening highlighted the seven founders of the Grange, and there was a quiz on Grange history. The hall and tables were decorated for Thanksgiving, and members enjoyed refreshments and fellowship after the meeting.



# Deaf Committee Report

By Sister Cara Magee-Johnston

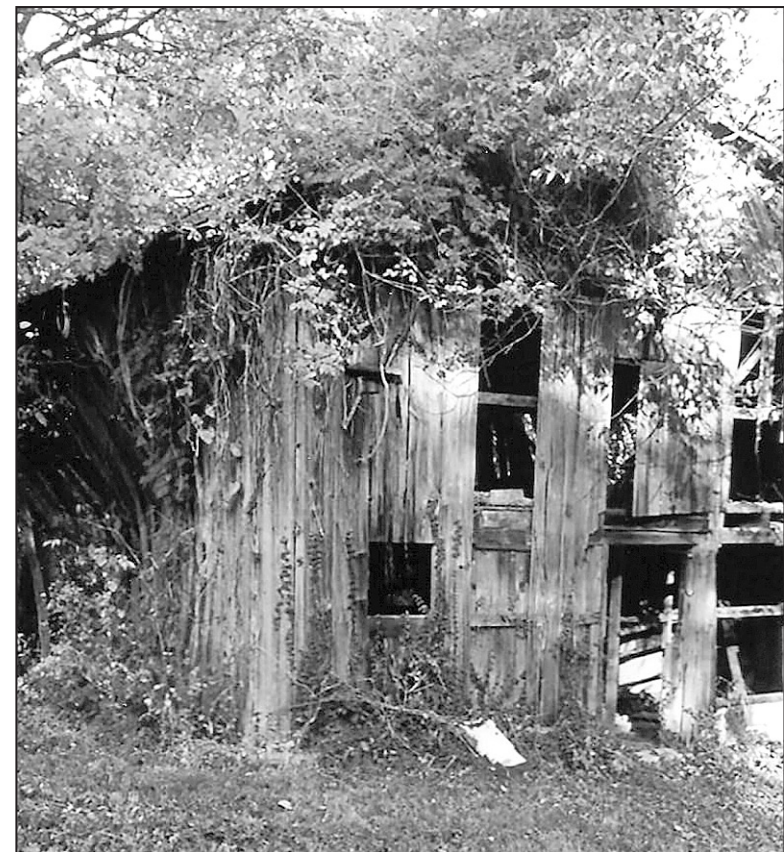
It has been a while since I have written/submitted an article. I believe August was the last time I wrote. We didn't have one in September due to State Session. I was advised the October issue had enough news with the contest winners. I am proud to have been one of those winners; best of show in photography. I recently received my pink ribbon noting my photo of my grandparent's "dilapidated" barn was on display at National Session. I somehow missed sending in an article for November and was informed there wouldn't be a December issue. So now here it is December 31, 2017 (a day or two late I'm sure) and I am writing my first article for 2018 {inside where it is toasty warm, while the outside temperature is frigid (at Mom's for the New Year)}. In my August article I covered the History of the Illinois Association of the Deaf history from 1905-1918. In this article, I'll be covering the next ten "sessions" from 1921-1949.

The twelfth convention of the IAD met in the State Senate Chamber in Springfield, August 11-14, 1921. A wreath was placed on the tomb of Lincoln in honor of his support for the Deaf, including his support of Gallaudet College. Mr. Rodenberger is re-elected president. That same year, Charles E. Sharpnack was elected IAD Treasurer for the first time. He held this position for a total of 33 years (1921 to 1927 and 1931 to 1958). On June 17, 1923, "The Home for the Aged and Infirm Deaf", located at 4539 Grand Boulevard in Chicago was dedicated. The Illinois Southern Chapter of the Illinois Association of the Deaf was organized in the parlor of the Y.W.C.A. at 245 Collinsville Avenue, East St.

Louis, on January 10th, 1925. The officers were elected as follows: A. J. Rodenberger, President; Miss Bernice Schilling, First Vice-President; Charles Schwartz, Second Vice-President; Walter Maack, Secretary; W. B. Wilson, Treasurer. The Moline Chapter closed in 1926 and the The State-Wide Bulletin was discontinued in 1927. The 15th tri-annual IAD Convention is held in Rockford, Illinois at the Faust Hotel, July 1 to 4, 1931. That same year, lobbying for support of the 'Paupers Bill' was underway. This bill mandated every almshouse and poor-farm in Illinois send its "deaf-mute" inmates to the IAD Home for the Aged and Infirm Deaf and provide the Home to be regularly paid, whatever sum the county, township, or city had been previously paying for their maintenance. The 16th tri-annual IAD Convention is held in Chicago during August 1934 with one day given to the Alumni Association for their meeting. During this convention, the status of the Home was given serious consideration. Income on endowment had been alarmingly reduced. Bequests had been fewer and less liberal. Some months before the situation became so acute that it was necessary for the Home to apply part of the endowment fund toward running expenses. The financial situation of the Home called for immediate attention. The location of the Home also received careful consideration. In 1935 three representatives from the IAD and one representative from the Alumni Association had a meeting with the Director of the Department of Public Welfare, Mr. A. L. Bowen, to urge further appropriations for the school. President H. S. Rutherford, Vice-President Peter T. Livhsis and Mrs.

Freda Meagher Represented the IAD, while The Alumni Association spokesman was President Rodenberger. The Springfield IAD Chapter was established in 1938. Virginia Dries Fitzgerald was elected secretary of the Chicago IAD Chapter. She held this position for 24 straight years (1938 to 1963). Finally to wrap up this month's history of the IAD, in 1949, Len Warshawsky was elected president. He held this position for a record 15 years (1949 to 1964). His ability to inform and organize the deaf of the State of Illinois remains unsurpassed.

I have some exciting news! Are any of you familiar Nyle DiMarco who rose to international fame after winning Cycle 22 of America's Next Top Model? Or maybe you saw him on the ABC reality show "Dancing with the Stars". He has a new role: philanthropist. That being advocating for full and early access to American Sign Language (ASL) and English for Deaf and hard of hearing children in the United States as a priority for the Nyle DiMarco Foundation which is



a nonprofit dedicated to improving the lives of every Deaf person in the world. He will be the keynote speaker at the 4th Annual Deaf Education Summit in Baton Rouge, Louisiana on January 26-27, 2018. Guess I better decide if I'm going or not! I already have a commitment that weekend

that can be adjusted.

I will write more about Nyle's Foundation in my February article, especially if I do go the Summit.

Quotable Quote: "Sign language is a human right. It guarantees Deaf children full access to language and learning," Nyle DiMarco



Leaf River Grange members recently presented dictionaries to all third grade students in Forreston grade school. The students were delighted. Presenters were Clifford and Myra Craven and Mary Jane Zipse.



# Flora Grange News

By **Lindakay F. Ebel**

Junior and senior members of Flora Grange had a very busy December, starting with bell ringing for the Salvation Army on November 25 and Dec. 2nd at PNC Bank in Belvidere.

Belvidere Hometown Christmas celebration is one of the favorite times for our Junior Grangers and Flora Grangers. Each year they decorate a store window at Ollmann Ernest Architects, 506 S. State Street using their two windows; this year had a blacksmith/horseshoeing shop on one side, treats for barn animals with a Christ-

mas tree and little girl decorating the tree on the other, and people passing by enjoy seeing live people taking part in the activities.

Again this year, the Flora Junior Grangers and Junior Grange committee decorated a Christmas tree at the Community Building, and later the tree was donated and delivered with decorations and gifts to a local family with three children. Grangers also collected items for a gentleman living alone, who recently lost a daughter and has no other family in the area.

Some forty-plus Flora Grange members attended the annual Christmas party-

potluck on Tuesday, December 12 at the Grange hall. The hall was decorated for Christmas with a Christmas tree and the tables had Christmas decorations. Grangers enjoyed an awesome meal with Chaplain Donna West leading us in prayer. Hats off to the serving committee of Laurel and Jack Ratcliffe and Tom Ratcliffe and everyone that brought in their favorite dish to share for the delicious potluck.

Dinner was enjoyed by all who attended and following dinner, Grange members made up trays for 11 shut-ins/elderly people with homemade cookies, candy and fresh fruit, brought in by Grange members. These trays were delivered by Grange members who spent time with a visit to each person who received a tray.

Following an awesome potluck supper, entertainment was provided by Flora Juniors and the junior committee. They presented a skit at a candy store and also with a chicken farmer. Between each skit, we sang a Christmas carol, learning about the history of each familiar carol that was sang.

The Christmas story was read from Luke 2, verses 1-20 by Junior Grange co-leader Kathee Frazer, and ended with a candlelight singing of Silent Night.

Master Albert Q. Ebel thanked Secretary Laurel Ratcliffe for updating and compiling Flora Grange program handbook for 2018, listing all committees, meeting dates along with fundraiser dates and member's names, addresses, phone numbers and e-mail addresses. Emalee Colver again collected "G" bills, total collected this evening was \$31.00.

Members of Flora Grange would like to wish everyone a Merry Christmas and a Happy New Year.

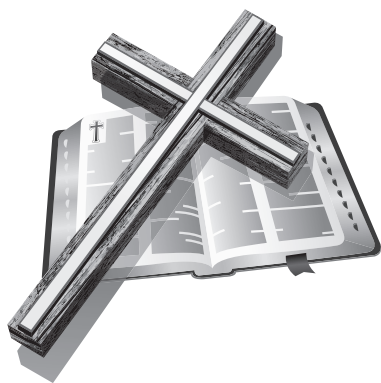
## Chaplain's Corner

By **Charlotte Mehrrens**

As we begin our journey to Bethlehem for the birth of our Lord Jesus we need to remember the true meaning of this glorious event to the manger to see baby Jesus. Many churches have Advent wreath that are lighted each Sunday during the Advent season, four candles on the wreath of evergreen is shaped in a perfect circle to symbolize the eternity of God. In some churches four purple candles are places in the circle while in the middle is placed a larger white candle as the Christ candle.

Jesus brings us Hope- expectation of what is to come and sometimes prophecy. Second candle is Love is sometimes called the Bethlehem candle, the third candle is Joy this candle is often called Mary's candle. The fourth candle is Peace it can often be called the Angel's candle. The Christ candle it lit on Christmas Eve to bring the birth of Christ into our world

Each candle lit represents



an aspect of the spiritual preparation for the coming of the Lord Jesus Christ. The circle of the wreath symbolize the eternal cycle of the seasons, while the evergreens and lighted candles signify the persistence of life in the midst of winter. Regardless of our religion let us all remember the true meaning of this season, may you each be a blessing to each other and share your love with your fellow brothers and sisters.

Merry Christmas to each of you and May you know God's love this season and always. BEHOLD I BRING YOU GREAT JOY



(Above and below) Belvidere HomeTown Christmas celebration included Flora Grangers and Juniors entertaining a huge crowd of folks, both on State Street and inside Ollmann Ernest Architects at their annual company party. This years theme was horseshoeing and treats for the barn animals.

